

Master Flash® Extreme Angle



Select an appropriate Master Flash® Extreme Angle with a pipe range that goes below and beyond fitting. If necessary, use the lines clearly shown on the flashing to trim an opening 10-20% (5-10% for Retrofit applications) smaller than the pipe diameter.



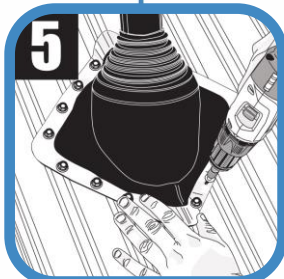
Slide the Master Flash® Extreme Angle down the pipe, using a non-petroleum-based lubricant to ease installation.



Press Master Flash® Extreme Angle down, bending it to conform to roof profile or irregularities. A blunt tool will help to form flashing to tight roof angles.



Apply sealant between the base of the flashing and the roof.



Use fasteners to complete sealing. For a secure installation, fastener spacing must not exceed 38mm (1.5").