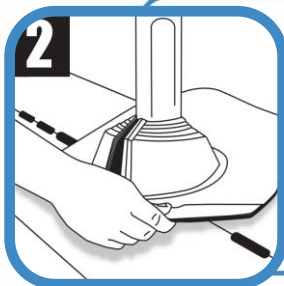


Master Flash® Electrical Mast Connection



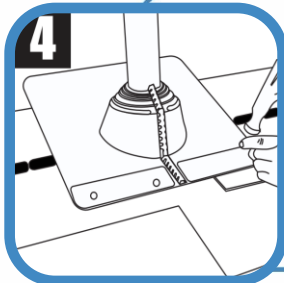
Cut the flashing down the seam. If necessary, use the lines clearly shown on the flashing to trim an opening 5 - 10% smaller than pipe diameter.



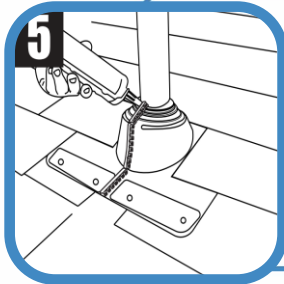
Wrap the Master Flash® around the roof penetration. Press Master Flash® down, bending it to conform to roof profile or irregularities. A blunt tool will help to form flashing to tight roof angles.



Install stainless steel gripper to close the previously cut seam.



Fix the flashing to the roof using nails, then cover the upper part of the flashing with roofing tiles.



Additional sealant may be applied between the flashing and the pipe. Apply as needed.