

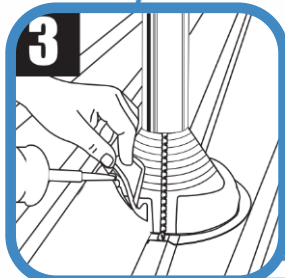
Master Flash® Universal Retrofit



Select an appropriate Master Flash® Universal Retrofit with a pipe range that goes below and beyond fitting. If necessary, follow the lines clearly shown on the flashing and create an opening 5-10% smaller than pipe diameter. Slice down the flange. For the steep roof slopes or higher corrugation of the profile, bigger size of Master Flash® should be chosen. If using this product as a Retrofit, cut down the side in the clearly-marked flange.



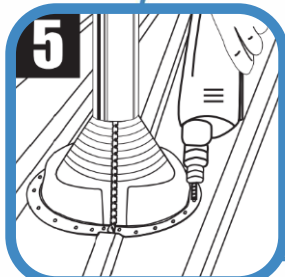
Wrap Master Flash® Retrofit around the pipe. Press the flashing down, bending it to conform to roof profile or irregularities. A blunt tool will help to form flashing to tight roof angles.



Apply sealant between the base roof and at the top of the flange.



Install the stainless steel gripper to seal the flange.



Fix the flashing using self-drilling screws. Spacing between fasteners must not exceed 38mm (1.5").