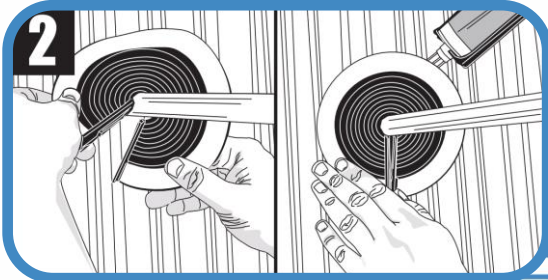


Master Flash® Low-Profile Multi-Flash



1 Select an appropriate Master Flash® Low Profile Multi Flash with a pipe range that goes below and beyond fitting. If necessary, use the lines clearly shown on the flashing to trim an opening 5-10% smaller than the pipe diameter. For retrofit applications cut the flashing along the marked seam.



2 Wrap the Master Flash® Multi Low Profile around the pipe, bending it to conform to roof profile or irregularities. A blunt tool will help to form flashing to tight roof angles. Apply sealant between the base of the flashing and the roof.



3 Install the stainless steel gripper to close the seam flashing.



4 Use fasteners to complete sealing. For a secure installation, fastener spacing must not exceed 38mm (1.5").



5 Crimp the gripper with pliers or other crimping tool to complete installation. Additional sealant may be applied onto the seam. Apply as needed.