

Master Flash® Universal

1.1 Master Flash® Universal – Technical Data Sheet

- Master Flash® Universal is made of EPDM rubber (ethylene propylene diene monomer) or silicone rubber.
- The base of the flashings is reinforced by a bonded aluminium insert which allows easy shaping to fit the roofing sheet profile.
- Roof flashings are intended for watertight sealing around installation elements / ducts penetrating the roof slope (i.e. ventilation pipes, solar ducts, chimney flues, electric cables and wires or other elements passing through the roof slope).
- Roof flashings can be used on various types of metal roofs including profiled metal tiles, metal flat sheets, metal trapezoidal sheets.

Ozone and UV Protection

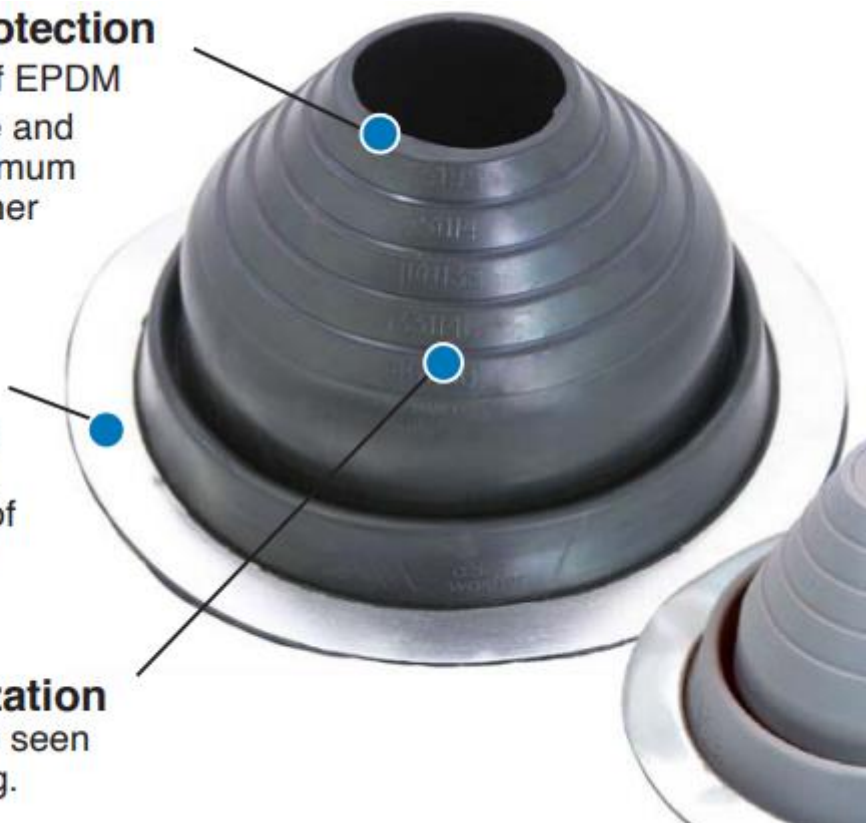
Flashings are made of EPDM or High Temp Silicone and are designed for maximum resistance to all weather conditions.

Adaptable Base

The base is designed to mold to most panel configurations and roof pitches regardless of pipe location.

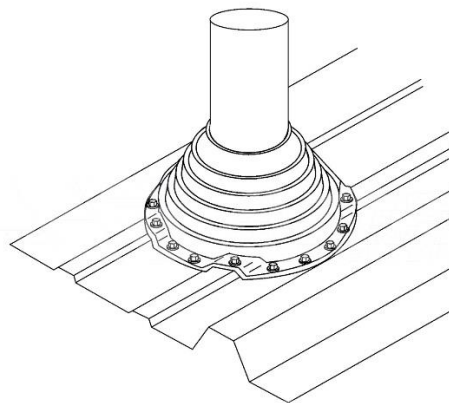
On-Site Customization

Pipe diameters can be seen clearly for proper fitting.



1.2 Master Flash® Universal – Material Specification and Sizes

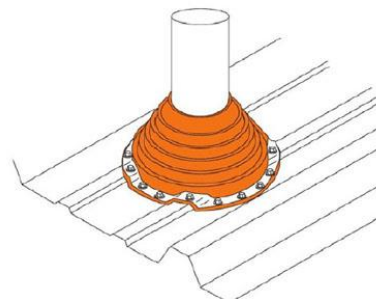
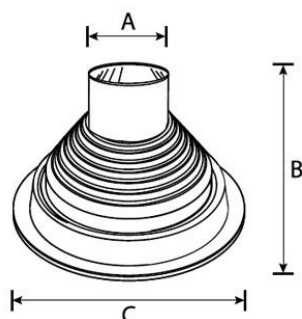
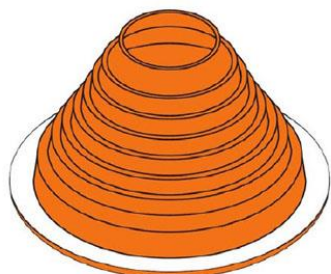
Master Flash®	EPDM 500	Silicone
ADVANCED OZONE RESISTANCE tested to:	70 h @ 500 pphm	70 h @ 500 pphm
HIGH TEMPERATURE RESISTANCE		
tested to:	intermittent	+135°C (+275°F)
	continuous	+100°C (+212°F)
LOW TEMPERATURE RESISTANCE tested to:	-55°C (-67°F)	-74°C (-101°F)
TENSILE SET maximum	10 MPa (1450 psi)	5 MPa (725 psi)
COMPRESSION SET maximum	25%	50%



RED SILICONE MASTER FLASH® UNIVERSAL

BLACK EPDM MASTER FLASH® UNIVERSAL





No.	Pipe Range	Material	Black EPDM Catalogue Number	A-Top Opening	B-Overall Height	C-Base Dimensions
Mini	Closed - 1" (0 - 25 mm)	Black or Colour EPDM, Silicone	RD051BE	Closed	1 - 1/2" (38 mm)	4" (101 mm)
1	Closed - 1 - 7/8" (0 - 47 mm)	Black or Colour EPDM, Silicone	RD101BE	Closed	2 - 7/8" (73 mm)	4 - 3/4" (120 mm)
2	1 - 3/4" - 3" (45 - 76 mm)	Black or Colour EPDM, Silicone	RD201BE	1 - 3/4" (45 mm)	3 - 1/2" (88 mm)	6 - 1/4" (158 mm)
3	Closed - 5" (0 - 127 mm)	Black or Colour EPDM, Silicone	RD301BE	Closed	3 - 3/4" (95 mm)	7 - 3/4" (196 mm)
4	3" - 6 - 1/4" (75 - 160 mm)	Black or Colour EPDM, Silicone	RD401BE	3" (75 mm)	4" (101 mm)	9 - 1/4" (234 mm)
5	4 - 1/4" - 7 - 1/2" (108 - 190 mm)	Black or Colour EPDM, Silicone	RD501BE	4 - 1/4" (108 mm)	4 - 1/2" (114 mm)	10 - 1/2" (266 mm)
6	5" - 9" (127 - 228 mm)	Black or Colour EPDM, Silicone	RD601BE	5" (127 mm)	4 - 3/4" (120 mm)	12 - 1/2" (317 mm)
7	6" - 11" (150 - 280 mm)	Black or Colour EPDM, Silicone	RD701BE	6" (150 mm)	6" (150 mm)	14 - 1/2" (368 mm)
8	7" - 13" (175 - 330 mm)	Black or Colour EPDM, Silicone	RD801BE	7" (175 mm)	6 - 1/2" (165 mm)	16 - 1/2" (412 mm)
9	9" - 20" (228 - 508 mm)	Black or Colour EPDM, Silicone	RD901BE	9" (228 mm)	8 - 3/4" (222 mm)	25 - 1/4" (641 mm)

COMPOUND AND SPECIFICATION DATA FOR MASTER FLASH® BLACK EPDM

TYPICAL PHYSICAL PROPERTIES OF MF EPDM
 ASTM D2000 M3BA510 A14, B13, C12, F17, Z1, Z2, Z3, Z4, Z5.

PROPERTY		VALUE	TEST METHOD
BASE MATERIAL		CROSS LINKED EPDM ETHYLENE PROPYLENE DIENE TERPOLYMER	N/A
COLOR		BLACK	N/A
TEST LEVEL		3	GRADE
TEST TEMPERATURE		B 100° C	GRADE
VOLUME SWELL		NO REQUIREMENT	CLASS
DUROMETER		50 (SHORE)	ASTM D 2240
TENSILE STRENGTH		10 MPA (1450 psi) MINIMUM	ASTM D 412
A14	HEAT AGING	70 hrs. @ 100° C Change in hardness Max +10 pts Change in tensile Max -25 % Change in ultimate elong. Max -25%	ASTM D 573
B13	COMPRESSION SET	22 hrs. @ 70 ° C MAX 25 %	ASTM D 395 B
C12	OZONE RESISTANCE	70 hrs. @ 50 pphm	ASTM D 1171
F17	LOW TEMPERATURE BRITTLENESS	3 MINUTES @ -40° C PASS	ASTM D 2137A, 9.3.2
Z1	TARGET HARDNESS	55 +/-5 SHORE A	ASTM 2240
Z2	SPECIFIC RUBBER	EPDM	PASS
Z3	HORIZONTAL FLAME RESISTANCE	NOT TO EXCEED 3 IN/ MINUTE	ASTM 2240

COMPOUND AND SPECIFICATION DATA FOR MASTER FLASH® SILICONE

TYPICAL PHYSICAL PROPERTIES OF MF SILICONE
 ASTM D2000 M4 GE 505 A19, B37, C12, F19, Z1, Z2, Z3, Z4, Z5, Z6, Z7.

PROPERTY		VALUE	TEST METHOD
BASE MATERIAL		SILICONE	N/A
COLOR		TERRA COTTA/GRAY	N/A
TEST LEVEL		4	GRADE
TEST TEMPERATURE		225° C	GRADE
VOLUME SWELL		MAX 80%	CLASS
DUROMETER		50 (SHORE)	ASTM D 2240
TENSILE STRENGTH		5 MPA (725 psi) MINIMUM	ASTM D 412
ULTIMATE ELONGATION		250 % MINIMUM	ASTM 412
A19	HEAT AGING	70 hrs. @ 225 C Change in hardness Max +10 pts Change in tensile Max -25 % Change in ultimate elong. Max -30%	ASTM D 573
B37	COMPRESSION SET	22 hrs. @ 175° C MAX 25%	ASTM D 395 B
C12	OZONE RESISTANCE	70 hrs. @ 50 pphm 38° C 100% quality retention	ASTM D 1171
F19	LOW TEMPERATURE BRITTLENESS	3 MINUTES @ -55° C (-67° F)	ASTM D 2137A, 9.3.2
Z1	TARGET HARDNESS	55 SHORE A	ASTM 2240
Z2	SPECIFIC RUBBER	SILICONE	N/A
Z3	HORIZONTAL FLAME RESISTANCE	NOT TO EXCEED 3 IN/ MINUTE	UL-94