

Master Flash® Multi – Standard Application



Select an appropriate Master Flash® Multi Standard with a pipe range that goes below and beyond fitting. If necessary, use the lines clearly shown on the flashing to trim an opening 10 - 20% smaller than pipe diameter. For the steep roof slopes or higher corrugation of the profile, bigger size of Master Flash® should be chosen.



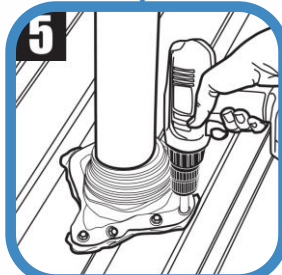
Slide the Master Flash® down the pipe, using a non-petroleum-based lubricant to ease installation.



Press Master Flash® down, bending it to conform to roof profile or irregularities. A blunt tool will help to form flashing to tight roof angles.



Apply sealant between the base of the flashing and the roof.



Fix the flashing to the surface using self-drilling screws assembled with washers. The spacing between the screws should not exceed 38 mm (1,5 inch.).

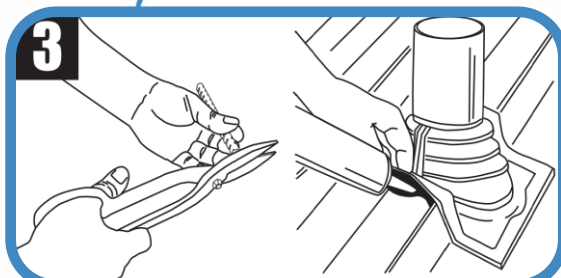
Master Flash® Multi – Retrofit Application



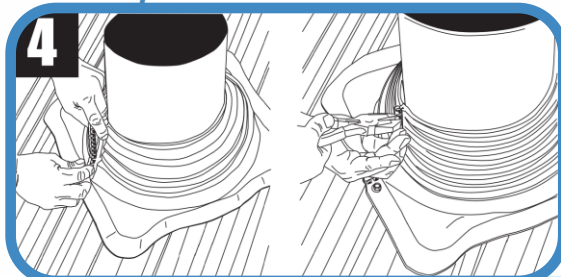
Select an appropriate Master Flash® Retrofit with a pipe range that goes below and beyond fitting. If necessary, follow the lines clearly shown on the flashing and create an opening 5-10% smaller than pipe diameter. For the steep roof slopes or higher corrugation of the profile, bigger size of Master Flash® should be chosen. If using this product as a Retrofit, cut down the side in the clearly-marked seam.



Wrap Master Flash® Retrofit around the pip and press it down, bending it to conform to roof profile or irregularities. A blunt tool will help to form flashing to tight roof angles.



Trim the stainless steel gripper to match the size of the cut flashing. Apply sealant between the base of the flashing and roof and at the top of the flange.



Crimp the previously cut flange with the gripper. Apply additional sealant on the seam if necessary.



Use fasteners to complete sealing. For installation, fastener spacing must not exceed 38 mm (1.5").